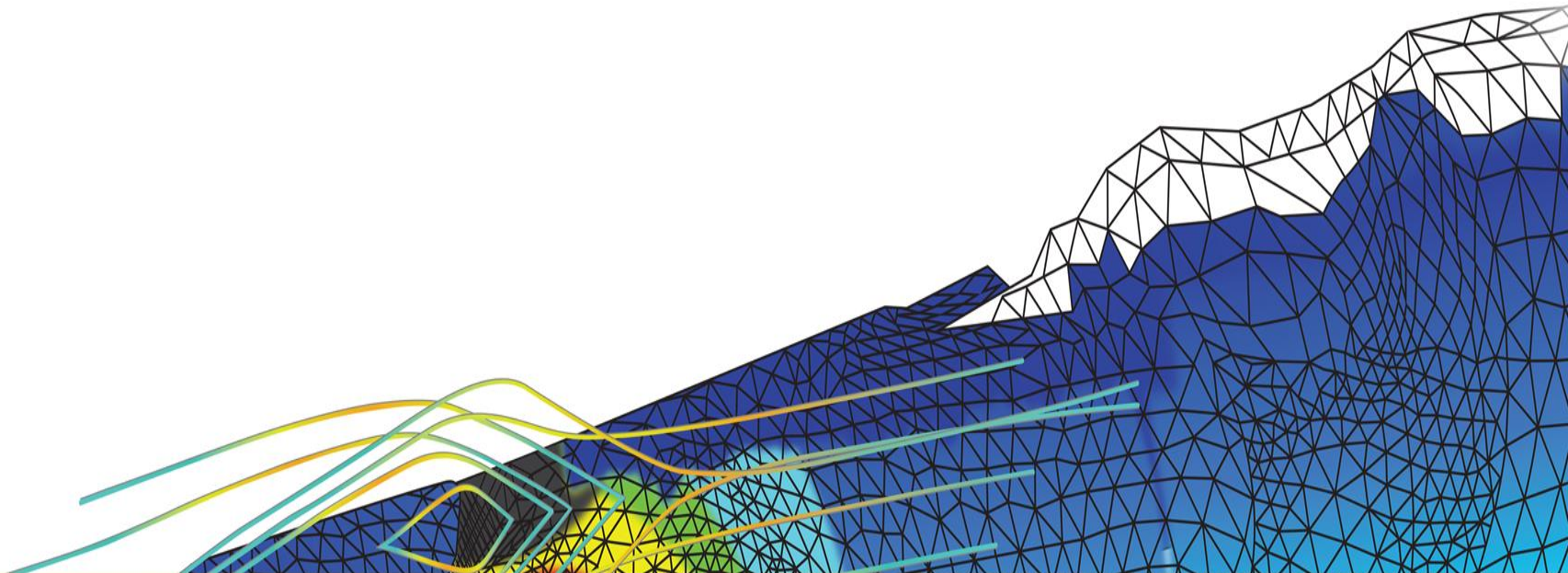




ACT Extensions (Apps): Installation Procedure

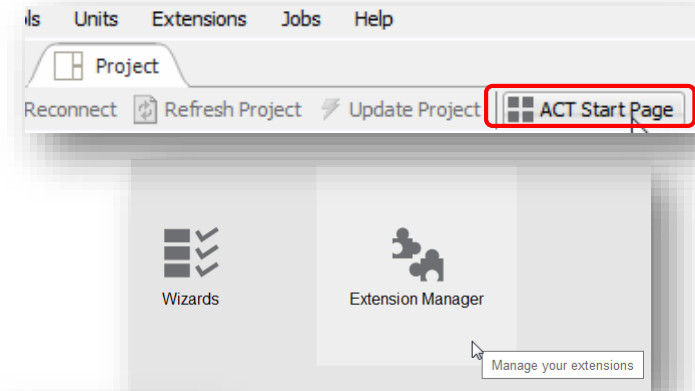


Binary App Installation

(1)

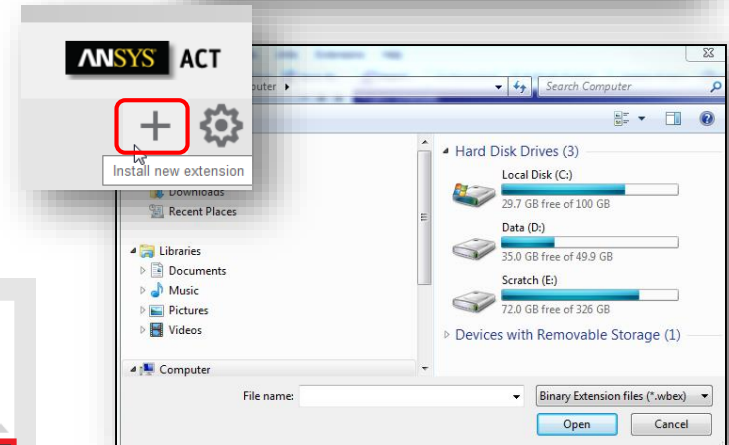
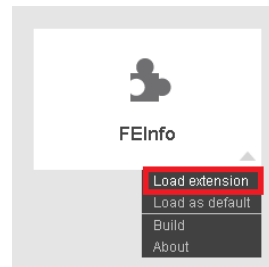
Installing from the ACT Start Page:

1. From the Project page, select **ACT Start Page**.
2. Click **Extension Manager**.
3. Click the **+** symbol in the top right corner.
A file dialog box opens for selecting the appropriate **WBEX** binary file.
4. Select the file and click **Open**.
The extension is installed.



Loading the extension:

1. From the Extension Manager, right-click the extension and select **Load extension**.
The extension is loaded.



Notes:

- The installed extension is stored in the following location: `%AppData%\Ansys\[version]\ACT\extensions`, where `[version]` is the release for your ANSYS installation. For example, if the 18.0 release is installed, `[version]=v180`.
- The installation creates a folder in this location, in addition to the WBEX file.

Binary App Installation

(2)

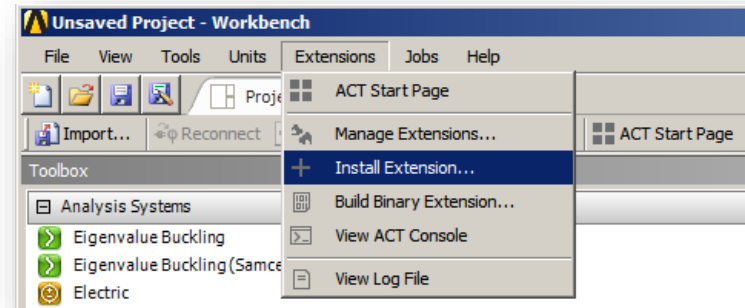
Installing from the Extensions menu:

1. From the **Extensions** menu, select **Install Extension**.

A file dialog box opens for selecting the appropriate **WBEX** binary file.

2. Select the file and click **Open**.

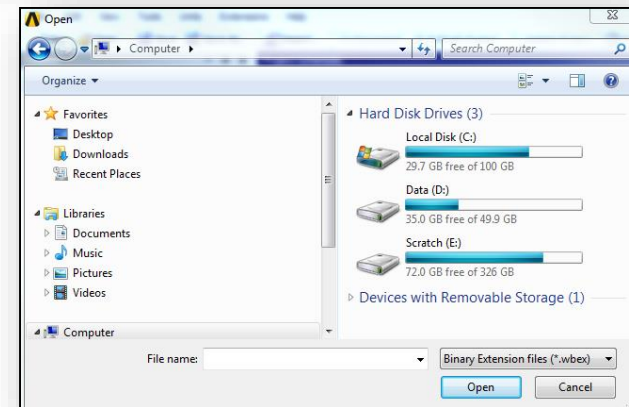
The extension is installed.



Loading the extension:

1. From the Extension Manager, right-click the extension and select **Load extension**.

The extension is loaded.



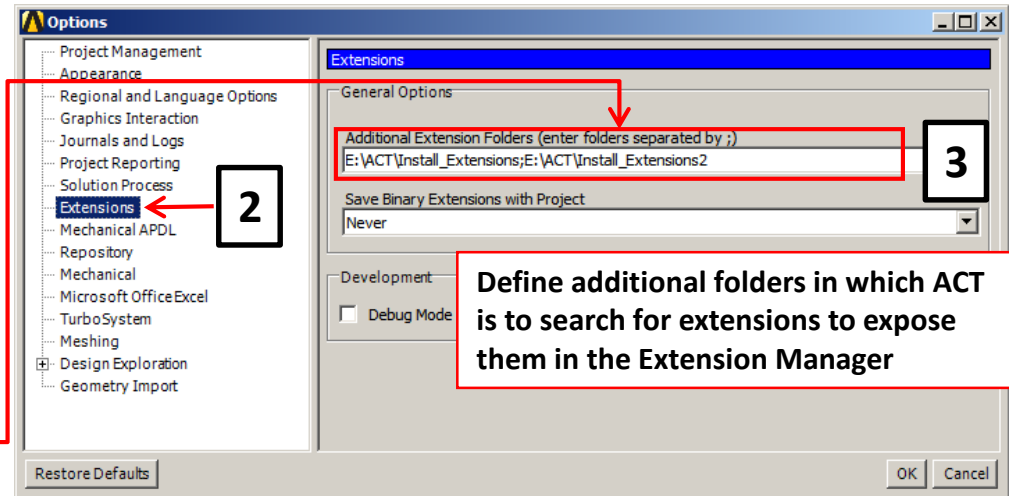
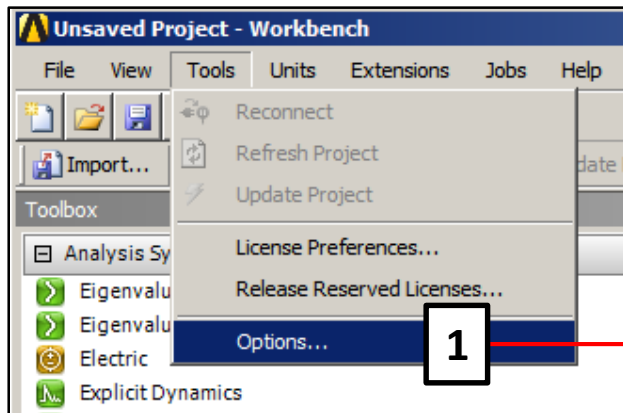
Notes:

- The installed extension is stored in the following location: `%AppData%\Ansys\[version]\ACT\extensions`, where `[version]` is the release for your ANSYS installation. For example, if the 18.0 release is installed, `[version]=v180`.
- The installation creates a folder in this location, in addition to the WBEX file.

Binary App Installation

(3)

- Once the binary extension is installed at default location, you can move the WBEX file and the folder to any other location
 - Default path: `%AppData%\Ansys\[version]\ACT\extensions`
 - New path: Any location on your machine or a shared drive to which you can write.
- All users interested in using the extension must add the path in their Workbench options.
 1. From the **Tools** menu, select **Options**.
 2. In the panel on the left, select **Extensions**.
 3. For **Additional Extensions Folder**, add the path.



Notes:

- During the scan of the available extensions, the folders are analyzed according to the following order:
 1. The application data folder (`%AppData%\Ansys\[version]\ACT\extensions`)
 2. The additional folders defined in the **Additional Extension Folders** option in Workbench
 3. The installation folder
 4. The `extensions` folder part of the current Workbench project (if the project was previously saved with the extension)
- If an extension is available in more than one of these locations, the first one according to the scan order is used

Scripted App Installation (source code)

- Paste the XML file and the corresponding folder on your computer. You can paste them in either:
 - The default path: `%AppData%\Ansys\[version]\ACT\extensions`
 - A user-defined path: Any location on your machine or a shared drive to which you can write.
- If the files are located in the default path, the extension is automatically available in the Extension Manager
- If the files are in a user-defined path, you must add the path to the **Additional Extension Folders** option in Workbench (Tools → Options) to make it available in the Extension Manager

